

Our Vision:

To develop positive and powerful learners who possess personal qualities that support their academic success and social and emotional learning and well-being.

Our Focus:

Strengthen students' resilience through evidence-based initiatives that teach coping skills, foster growth mindsets, and encourage positive relationships, while embedding explicit direct instruction in literacy and numeracy and enhancing mathematics achievement by aligning practices with the South Australian Curriculum and promoting mathematical dispositions.

1 Wellbeing

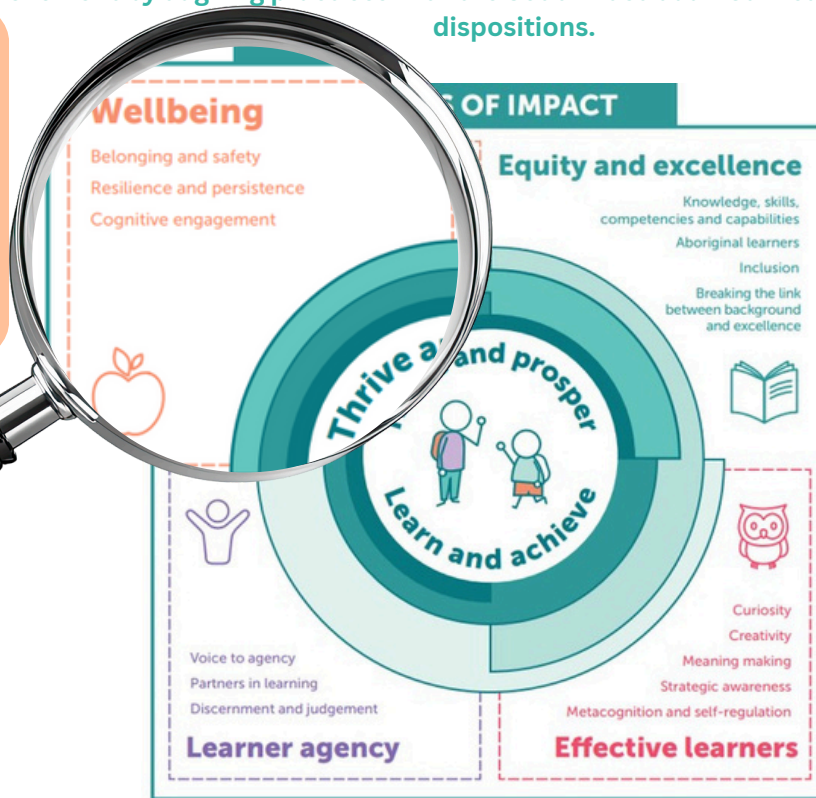
Action - Explicitly teach gratitude, empathy, and mindfulness, supporting students to build resilience and positively impact their engagement in learning.

2 Equity and Excellence

Strengthen literacy and numeracy outcomes for all students by embedding explicit direct instruction enabling students to engage in evidence-informed, equitable, and inclusive learning environments.

3 Equity and Excellence

Enhance mathematics achievement by aligning teaching practices with the South Australian Curriculum and fostering mathematical dispositions and resilience to build student confidence and skills.



Impact will be measured using evidence-based tools, including student wellbeing and engagement surveys, assessment data in literacy, numeracy, and mathematics, leader walkthroughs, and student/leader conferences around learning, as well as feedback from the school community to track improvements in resilience, achievement, and inclusive learning.