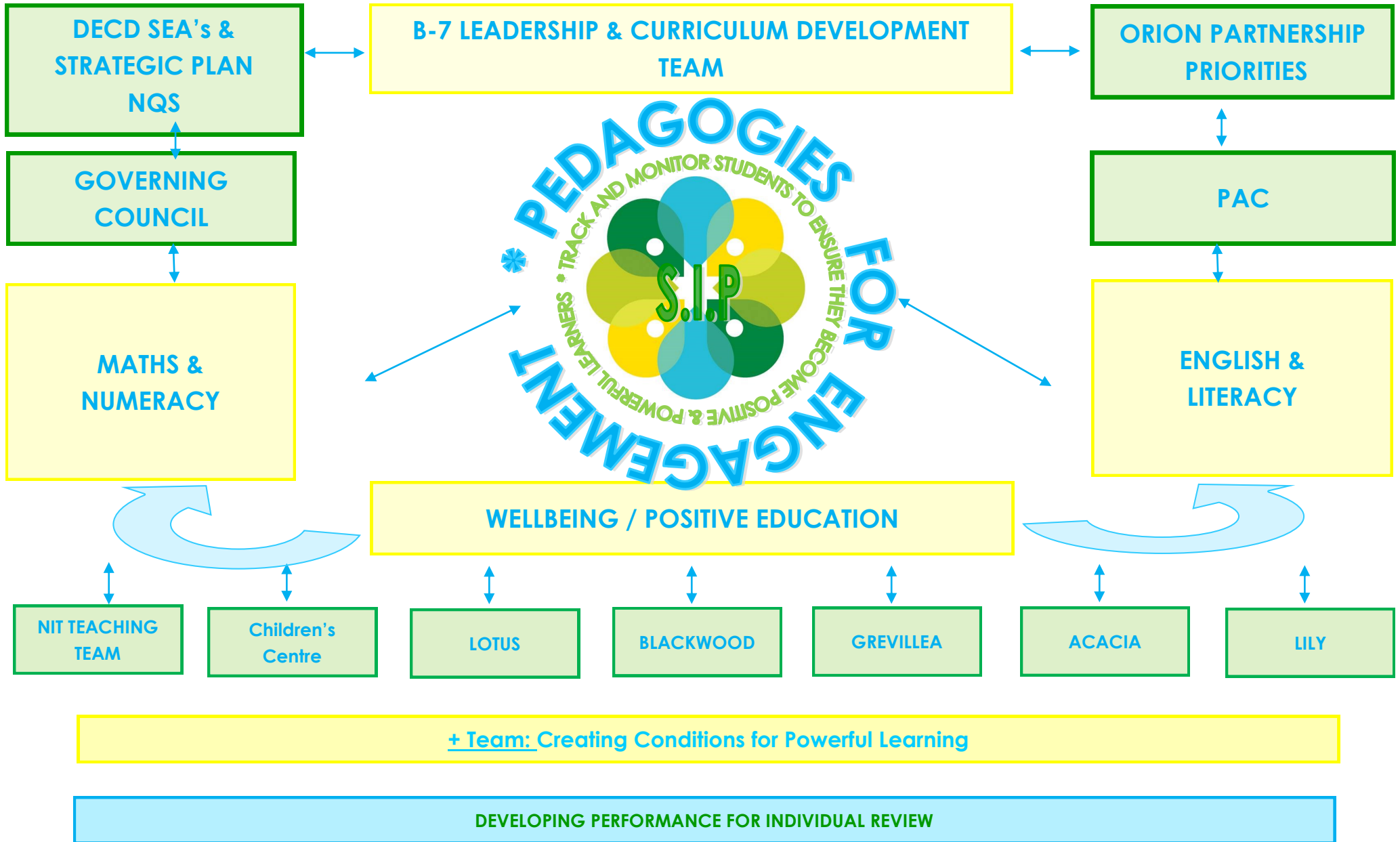


**QUALITY AND SITE IMPROVEMENT PLANNING PROCESSES**



## Improvement Journey

In 2015 Lake Windemere B-7 staff participated collaboratively in a series of staff meetings and pupil free day workshops reviewing the sites directions and making recommendations for the 2016 Site Improvement Plan (SIP). Staff analysed a ranged of data including PAT R , PAT M, Running Records, NAPLAN and Wellbeing data.

The recommendations reduced the SIP from four to three in the areas of Literacy, Numeracy and Wellbeing and Engagement. Professional Development requirements and resource allocation were aligned to include

- Provision of a Mathematician in residence though PMA to work with PLC's collaboratively to increase conceptual knowledge, pedagogical improvement and use of data to monitor and track individual students.
- Writing identified as key are for development within the Literacy area and all R-7 staff engaged in Literacy for learning to improve knowledge of the writing requirements for inclusive practice.
- Positive Education becoming an underpinning factor throughout all learning activities as an agreed pedagogical focus.

At the beginning of 2016 B-7 alignment was a focus and the development of the improvement cycle on the review cycle was developed to support change throughout the site